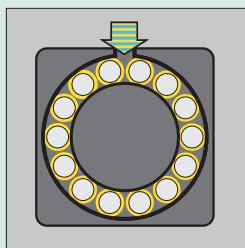




TMT Bar Rod Mill



TURBOLUB®

Oil-Air Lubrication

TURBOLUB® Oil-Air Lubrication for Long Products

Heat, dirt and extreme loads on equipment in heavy industry have a negative impact on bearings in wire rod and bar rod mills. This will always lead to high wear and shorter lifetime.

High costs for the procurement of bearings and other wear parts, downtimes and loss of production are the result. The patented REBS TURBOLUB® Oil-Air Lubrication system is the most common used oil-air system in heavy industry worldwide, with well over 1000 installations.

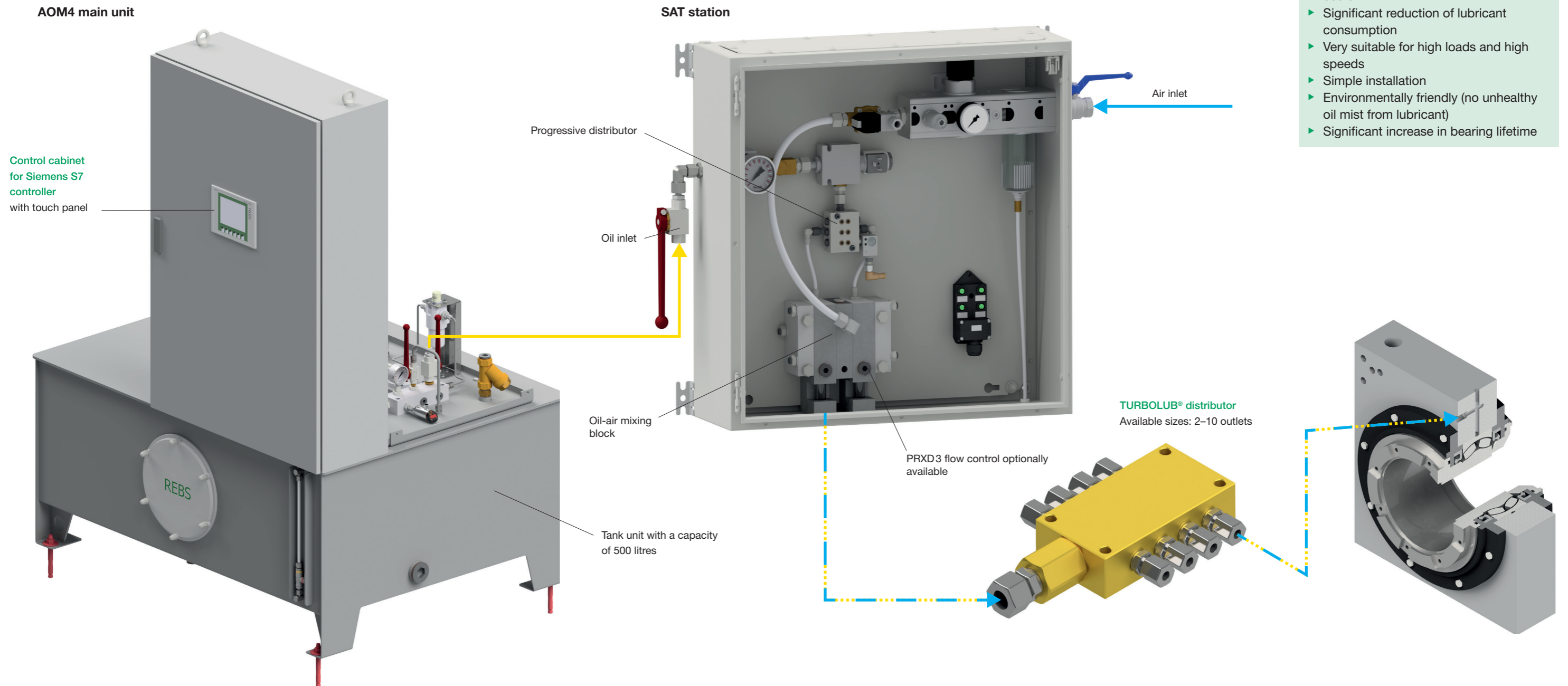
Based on more than 40 years of experience, a multitude of re-emerging applications, and hundred of satisfied customers, REBS has enhanced its oil-air system and introduced a system specifically for long products. This system takes into account the major customer requirements in terms of performance, quality standards and customer benefits.

Problems with incorrect lubrication of bearings

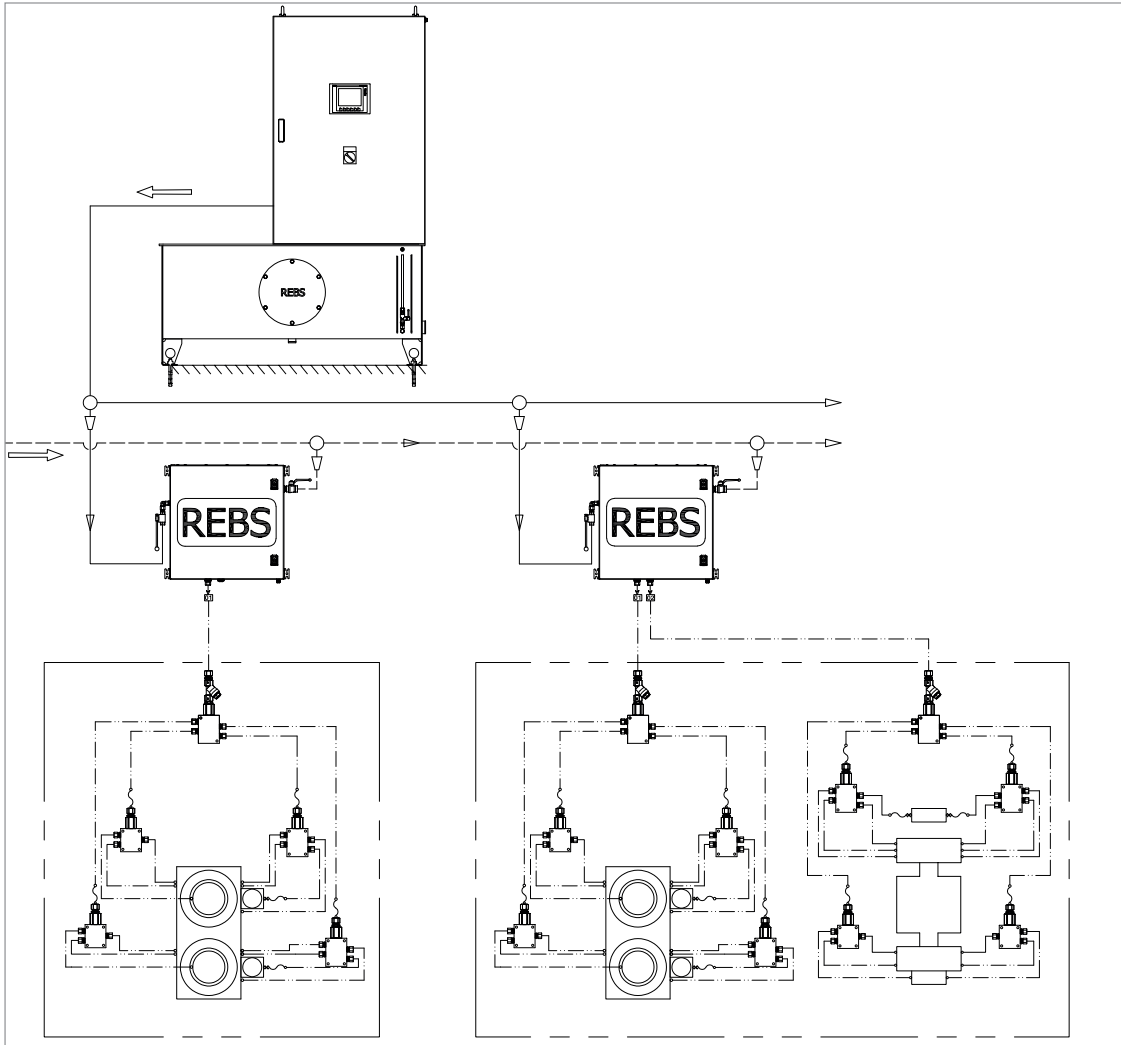
- ▶ Shortened bearing lifetime due to insufficient lubrication
- ▶ Time-consuming and costly maintenance work due to bearing damage
- ▶ Penetration of dirt and water results in bearing damage
- ▶ Excessive lubricant consumption with resulting environmental impact

Benefits of the New TURBOLUB® Oil-Air Lubrication for long products

- ▶ Simple installation and expansion options for the standardised TURBOLUB® oil-air system
- ▶ Maximum process reliability through function monitoring of the complete system
- ▶ Significantly reduced maintenance costs
- ▶ Significant reduction of lubricant consumption
- ▶ Very suitable for high loads and high speeds
- ▶ Simple installation
- ▶ Environmentally friendly (no unhealthy oil mist from lubricant)
- ▶ Significant increase in bearing lifetime



Schematic drawing of the system:



General system properties:

- ▶ Two supply pumps/one stand by
- ▶ 500 litre tank and SAT stations in painted steel (standard RAL 7035)
- ▶ Dimensions SAT Station: 600 × 600 × 210mm
- ▶ Filling connection with G1" strainer
- ▶ ProfiNet/PROFIBUS connection
- ▶ Level control
- ▶ 1 to 2 outlets per satellite with G1/2" as standard
- ▶ Oil-air outlets optionally available with PRXD 3 flow control

Typical applications – we gladly advise you:

- ▶ Wire rod mills
- ▶ Bar rod mills

