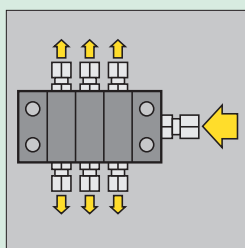
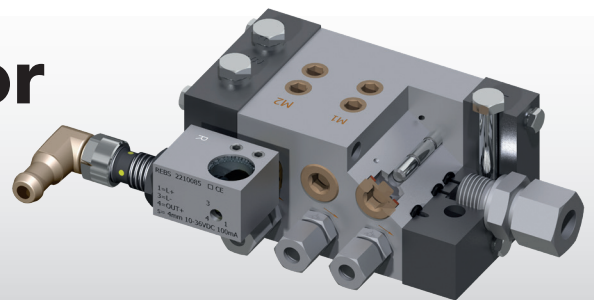




Progressive distributor

Centrally lubricated –
progressively distributed



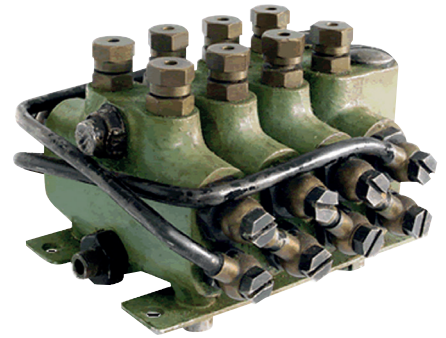
Central lubrication

Quality made in Germany

In 1936 company founder Alexander Rebs invented the first progressive distributor in his garage in Düsseldorf. It was – as would become evident in the following years – a groundbreaking new development which was key to the glory and success of REBS Zentralschmiertechnik and revolutionised lubrication technology. The pioneering innovation was that the progressive distributor distributes the fed lubricant in rotation to several outlets. This principle is implemented by pistons which are automatically driven by the lubricant pressure. One distributor cycle is completed when the preset lubricant quantity has been dispensed once at all outlets. The amount of lubricant that is dispensed at each outlet depends on the piston diameters, among other things.

Outlets can be combined directly at the distributor by means of links. This makes it possible to distribute different quantities of lubricant individually to the outlets. All distributors can be ordered with or without screw connections.

Visual or electrical monitoring of the distributor cycle is also possible with all models.



Advantages of the REBS progressive distributor

- ▶ Configurable distribution of the lubricant to several outlets with precise division independent of back pressure
- ▶ Cascading of several distributors connected in series for individual requirements
- ▶ Different delivery volume in different sizes/models
- ▶ Numerous variations of quantity distribution possible (especially with the element construction method)
- ▶ Suitable for various lubricants and other media up to NLGI 2
- ▶ Visual/electrical monitoring possible
- ▶ Robust and durable design
- ▶ Maintenance-free

Block distributor

Type VK, VKS, VM and VMS

The Block distributors VK and VM are made from a solid cast steel block. Cast steel has good running properties and enables virtually wear-free operation, which qualifies this series for the highest standards. The cast distributors are nickel-plated and as a result are compact and robust at the same time.

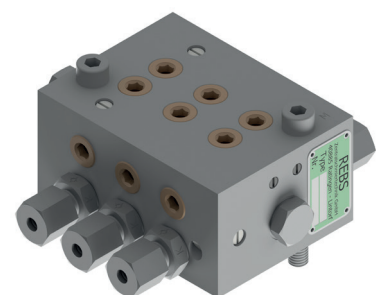
The new series VKS and VMS made from galvanised machining steel enables more cost-effective use with the same functionality.



VK distributor



VKS distributor



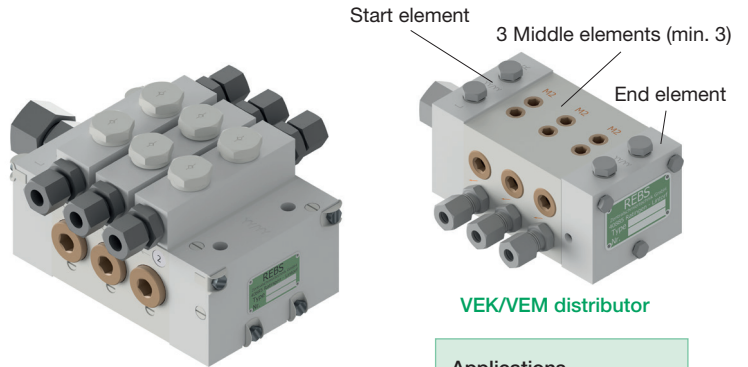
VM distributor

Progressive distributor

Element distributor

Type VEK, VEM, VEG, VEU

Element distributors comprise various elements: start and end as well as at least three middle elements. The individual middle elements are made from solid cast steel and each have two outlets. Thanks to the modular design, the lubricant quantity to be dispensed and the number of outlets can be designed for different requirements. Special designs with outlets on the top are also possible.



VEG/VEU distributor

VEK/VEM distributor

Applications

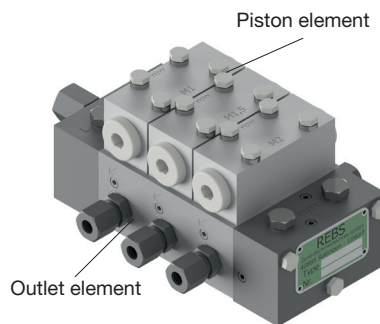
All applications in which lubricant is to be applied evenly, for example:

- Container loading ports
- Escalators
- Production lines
- Press manufacture
- Steelworks
- Ship lifts
- Steel- and aluminium works

Module distributor

Type KEK, KEM

In the module distributors middle elements are divided into piston and outlet elements. The outlet elements are made of aluminium, the piston elements of cast steel or steel. By replacing the piston elements at the top the delivery volume of the individual outlets can be easily changed without having to dismantle the pipe. Outlets can also be bypassed with dummy plates. This is particularly advantageous if system parts to be lubricated are subsequently put into operation or should be shut down. Module distributors are made from solid cast steel. Thanks to the modular design, the lubricant quantity to be dispensed and the number of outlets can be designed for different requirements.



KEK/KEM distributor

There is also a series made of stainless steel 1.4404 for aggressive environments.

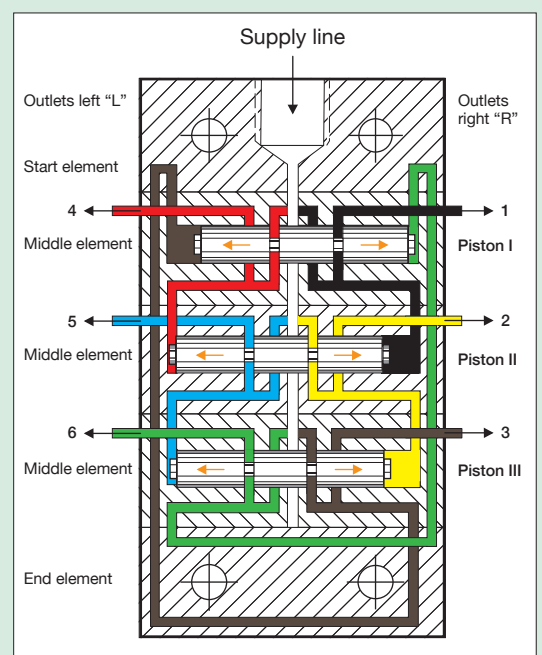
In the starting position, piston I sits on the right, pistons II and III are on the left. The lubricant is delivered by the pressure in the supply line (white) through the left ring groove of piston I (red) and in doing so moves piston II to the right side. The lubricant (black) is conveyed via the ring groove of piston I from outlet 1.

Then via the left ring groove of piston II (blue) the lubricant pushes piston III to the right side. The lubricant (yellow) is pushed through the ring groove of piston II from outlet 2.

Then the lubricant pushes piston I to the left via the left ring groove of piston III (green). As a result, the lubricant (brown) is pushed through the right ring groove of piston III from outlet 3.

The function of the pistons is repeated inversely as long as lubricant is supplied. Starting from the lubricant entry (supply line), the lubricant forced out from piston II emerges at outlet 1 or 4, from piston III at outlet 2 or 5; etc.

If only one lubrication point is clogged, the distributor immediately stalls and the lubricant supply is interrupted. High operational reliability is guaranteed with the option of electrical monitoring of the piston rotation.



Accessories/Option	Block distributor				Element distributor				Module distributor	
	VK	VKS	VM	VMS	VEK	VEM	VEG	VEU	KEK	KEM
Visual circulation control (position indicator)	x	x	x	x	x	x	x	x	x	x
Electrical circulation control (N1)	x	x	x	x	x	x	x	x	x	x
Design in stainless steel 1.4404									x	x
Weld-on plate	x	x	x	x	x	x	x	x	x	x
Integrated solenoid valve at inlet (MV)					x	x	x	x		
Non-return valves in the outlets (RV)	x	x	x	x	x	x	x	x	x	x
Number of outlets*	2-20	2-20	6-20	6-20	6-30	6-30	6-30	6-30	6-30	6-30
Delivery volume max. [l/min]	0,3	0,3	1,5	1	1	3	6	12	1	3,5
Inlet thread	G1/8	G1/8	G1/4	G1/4	G1/4	G1/4	G1/2	G3/4	G1/4	G1/4
Outlet thread	G1/8	G1/8	G1/4	G1/4	G1/8	G1/4	G3/8	G1/2	G1/8	G1/4

Example

You would like	An element distributor with maximum six outlets, with pipe fittings of 8 mm at inlet and outlet with non-return valve of 6 mm and electrical monitoring.
You get	VEK 06/06-08/06 RV N1

*We will be happy to design the right distributor to meet your individual requirements.

