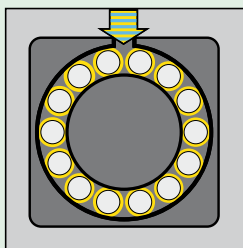
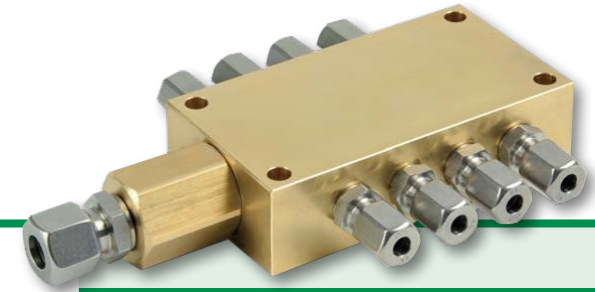




REBS TURBOLUB®
Oil-Air Modular System



TURBOLUB®
Oil-Air Lubrication



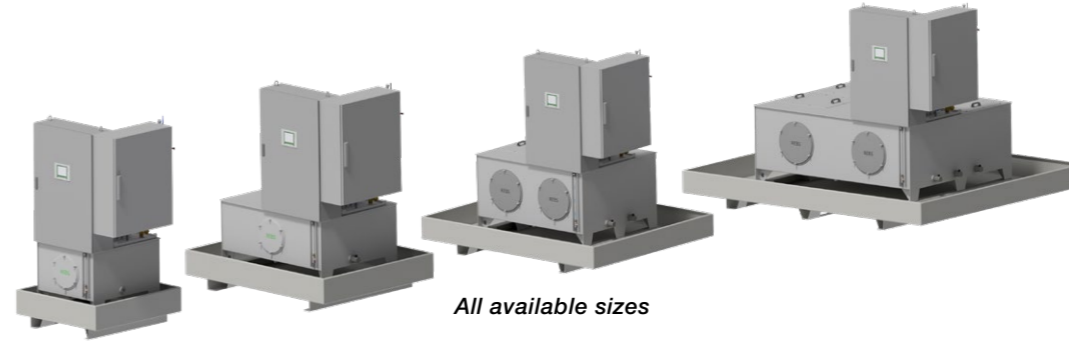
The TURBOLUB® Oil-Air Modular System

Heat, pollution and extreme loads on equipment in heavy industry do have a negative impact on various lubricated parts of continuous casting plants, rolling mills, roller tables and other applications. This will always lead to more wear and shorter lifetime.

High costs for new procurement of bearings and other wear parts, downtimes and loss of production are the results. The patented REBS TURBOLUB® Oil-Air Lubrication is the most common oil-air lubrication system in the heavy industry with more than 1,000 units installed around the world.

Based on more than 40 years of experience, a multitude of re-emerging applications and hundreds of satisfied customers, REBS has enhanced its Oil-Air System and introduces a Modular System. This system takes into account the major customer requirements in terms of performance, quality standard and customer benefit.

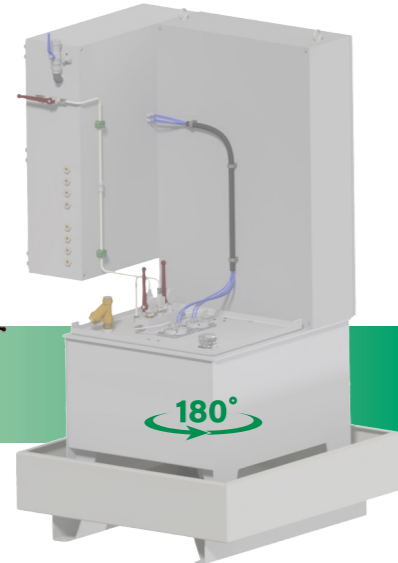
Variations of the TURBOLUB® Oil-Air Modular System



Advantages of the TURBOLUB® System:

- ▶ Maximum process reliability through function monitoring of the complete system
- ▶ Significantly reduced maintenance costs
- ▶ Significant reduction of lubricant consumption
- ▶ Very suitable for high loads and high speeds
- ▶ Simple installation
- ▶ Return lines, optional oil return possible
- ▶ No unhealthy oil mist, environmental friendly
- ▶ Significant increase in bearing life

Control unit with touch panel Siemens S7



AOM 1 (with attached SAT station)
AOM 4 (with separate SAT stations)

Tank sizes:
250 l
500 l
1,000 l
2,000 l

Oil pan (optional)

IO-Modules
Power supply

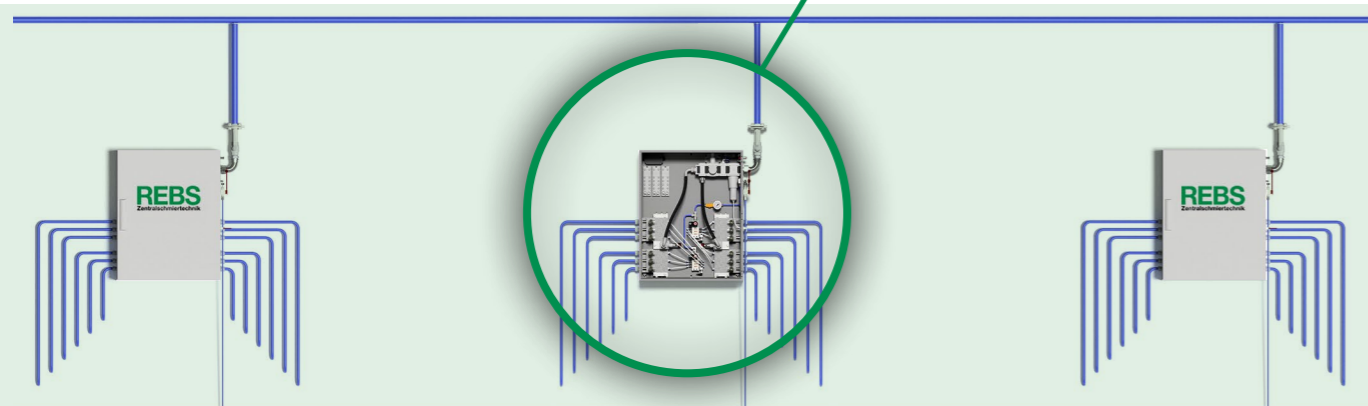
Air supply unit

Oil inlet

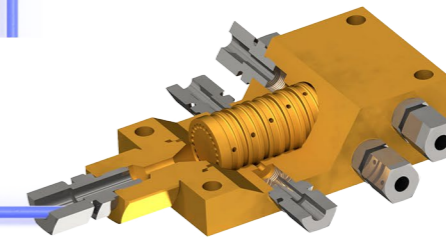
Distributors & Assembly sets

Benefits of the new TURBOLUB® Oil-Air Modular System:

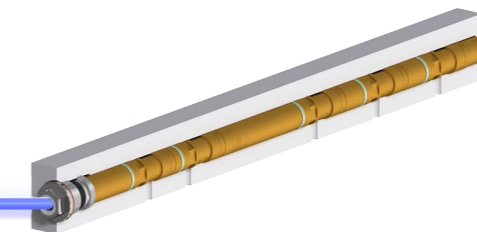
- ▶ 100 % TURBOLUB® technology
- ▶ Scalable modular design
- ▶ Fast technical clarification and quotation
- ▶ Significantly reduced delivery times



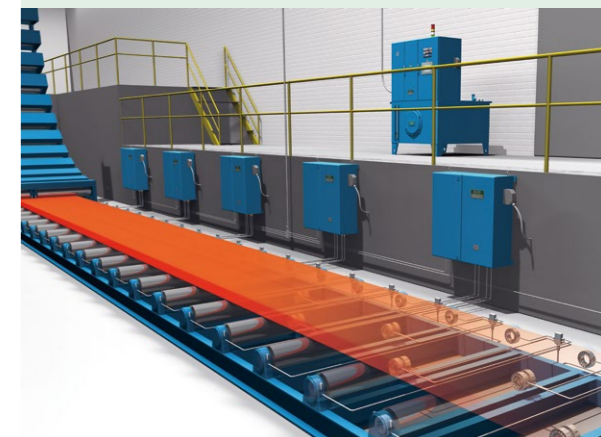
Modular oil-air mixing block
Two separately controllable outlet modules as standard
Max. 12 outlets G1" version
Max. 16 outlets G1/2" version
PRXD flow controls (optional)



TURBOLUB® Distributor
Available sizes: 2-10 outlets



TURBOLUB® Assembly sets
Available sizes:
2-7 outlets in standard
(Ø 15 and Ø 25 mm)



Type code	Main Station						+	Num. SAT	SAT AOM1						
	AOM 4	-	0250	-	P	-			0	-	0	-	UL		
Basic configuration								0	G1/2	-	5	-	0	-	UL
AOM 1 (Main Station)								1							
AOM 4 (Main Station + x satellites)								2							
								3							
								4							
Tank size								5							
0250 = 250 l								6							
0500 = 500 l								7							
1000 = 1,000 l								8							
2000 = 2,000 l								9							
								10							
Pump unit								11							
E = electrical (with oil filter+electr. VA)								12							
P = pneumatic (without oil filter)								13							
								14							
Tank heater								15							
0 = no								16							
H = yes								17							
								18							
Oil pan (acc. WHG)								19							
0 = no								20							
S = yes															
Number of SAT stations															
0 = AOM 1															
≥1 = AOM 4															
Air treatment															
G1/2 = up to 60 lubricating points															
G1 = from 60 up to 300 lubricating points															
Number of outlets (max. 12 (G1) or 16 (G1/2))															
1-12/16															
Drainage															
0 = without drain Valve															
D = with drain Valve															
Special features															
UL, EAC, special voltage ...															

General system properties

- ▶ Two supply pumps / one stand by
- ▶ Tank, SAT stations in painted steel (RAL 7035)
- ▶ Per satellite max. 12 outlets in the G1" version and 16 outlets in the G1/2" version
- ▶ Profinet/PROFIBUS connection
- ▶ Filling connection with strainer G1"
- ▶ Level monitoring with 4 switching points

Typical applications – we gladly advise you:

- ▶ Continuous Casting Plants
- ▶ Roller Tables
- ▶ Cold and Hot Rolling Mills
- ▶ Z-Mills
- ▶ Tandem-Mills
- ▶ Levelling Machines