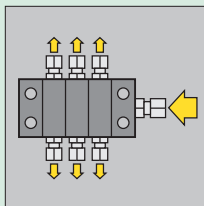


Source: Primetals Technologies



## Central Lubrication

Dual-Line Lubrication

### Dual-Line Lubrication

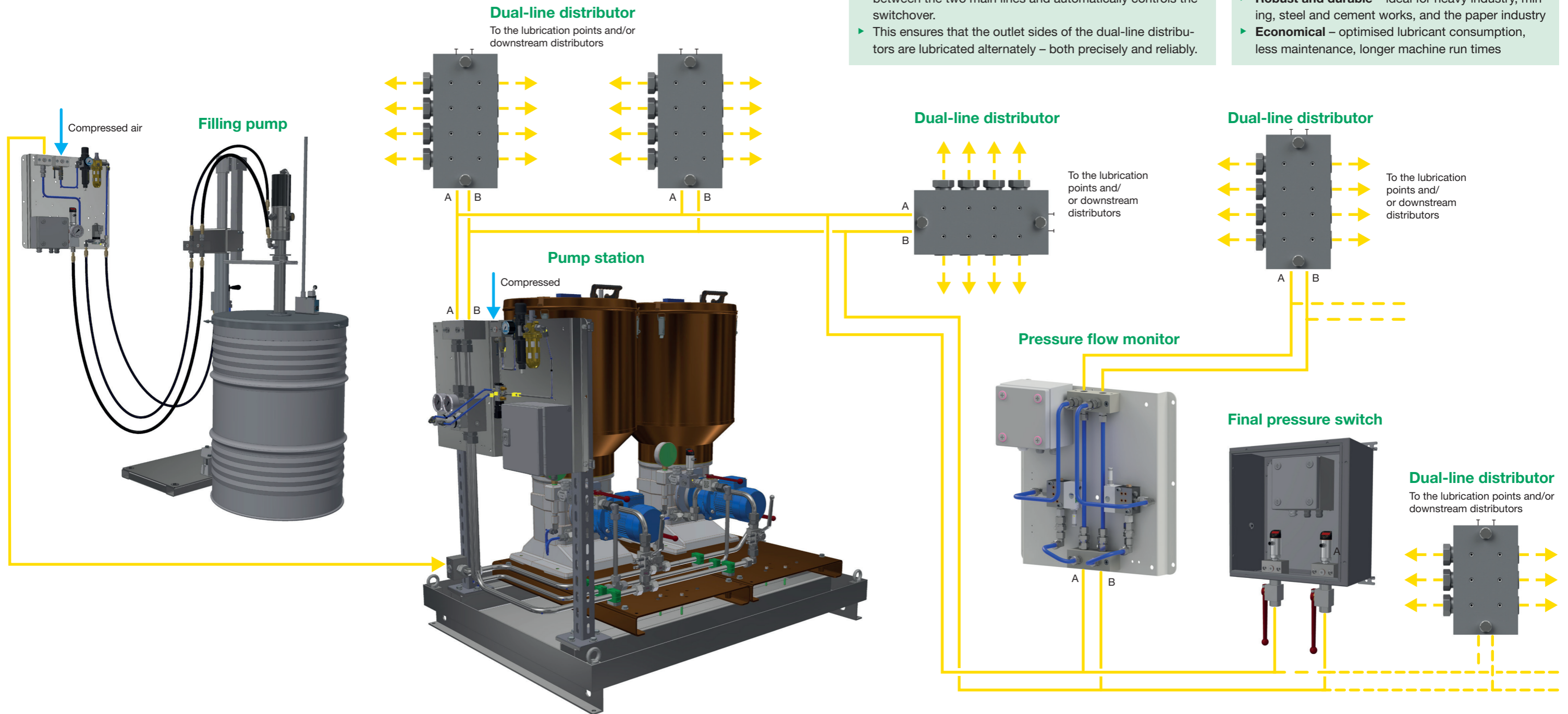
Heat, dirt and extreme loads in heavy industrial plants have a negative impact on bearings in continuous casting plants, rolling mills and roller beds, for example. This leads to high wear and a short service life.

Our **dual-line lubrication systems** supply lubricant reliably and evenly to lubrication points, such as bearings, sliding surfaces or guides.

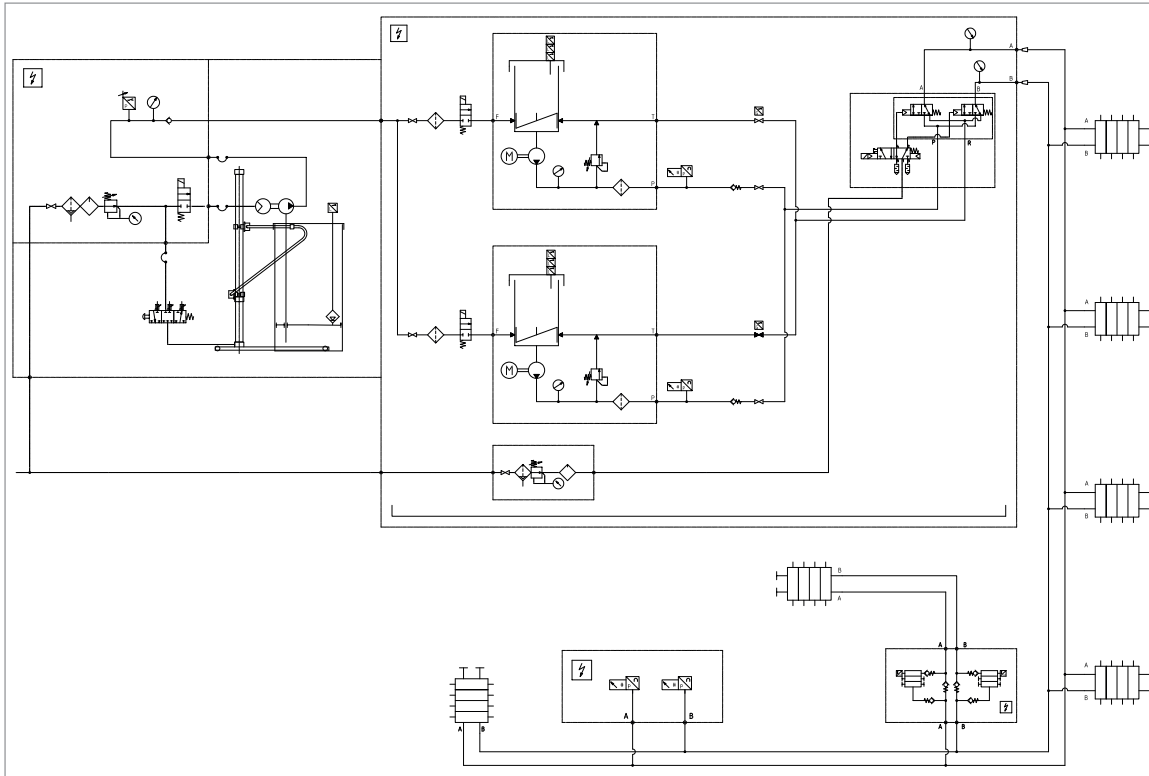
Based on years of experience and a multitude of re-emerging applications, REBS has further developed its dual-line lubrication. This system takes into account the key customer requirements in terms of performance, quality standards and customer benefits.

- #### Functionality
- ▶ Two main lines are alternately **pressurised** or **depressurised** via a changeover valve.
  - ▶ While the pressurised main line A conveys the lubricant to the distributors, main line B is connected, without pressure, to the container via the return line.
  - ▶ A final pressure switch monitors the set differential pressure between the two main lines and automatically controls the switchover.
  - ▶ This ensures that the outlet sides of the dual-line distributors are lubricated alternately – both precisely and reliably.

- #### Advantages of dual-line lubrication
- ▶ **High operational reliability** – even with long pipe runs and extreme conditions
  - ▶ **Precise metering** – each lubrication point receives exactly the set amount
  - ▶ **Ease of control** – fully automatic cycle operation with interval time control
  - ▶ **Robust and durable** – ideal for heavy industry, mining, steel and cement works, and the paper industry
  - ▶ **Economical** – optimised lubricant consumption, less maintenance, longer machine run times



## Schematic drawing of the system:



### General system properties:

- ▶ Boost pumps for 200-litre drums, including lifter and air treatment
- ▶ Single or double pumping stations for one or two dual-line strings
- ▶ Final pressure switch in housing/on plate
- ▶ Pressure flow monitor in housing/on plate
- ▶ RZV-S/E dual-line distributor
  - Galvanised steel or stainless steel (1,4404)
  - 2–8 outlets
  - With fixed stops, adjusting device or monitoring
- ▶ All components can be adapted to your requirements

## Typical applications – we gladly advise you:

- ▶ Continuous casting machines
- ▶ Auxiliary lubrication points on rolling mills
- ▶ Roller beds
- ▶ Mills and crushers
- ▶ Presses
- ▶ Slide bearings
- ▶ Spindle guides
- ▶ Further areas of application on request

